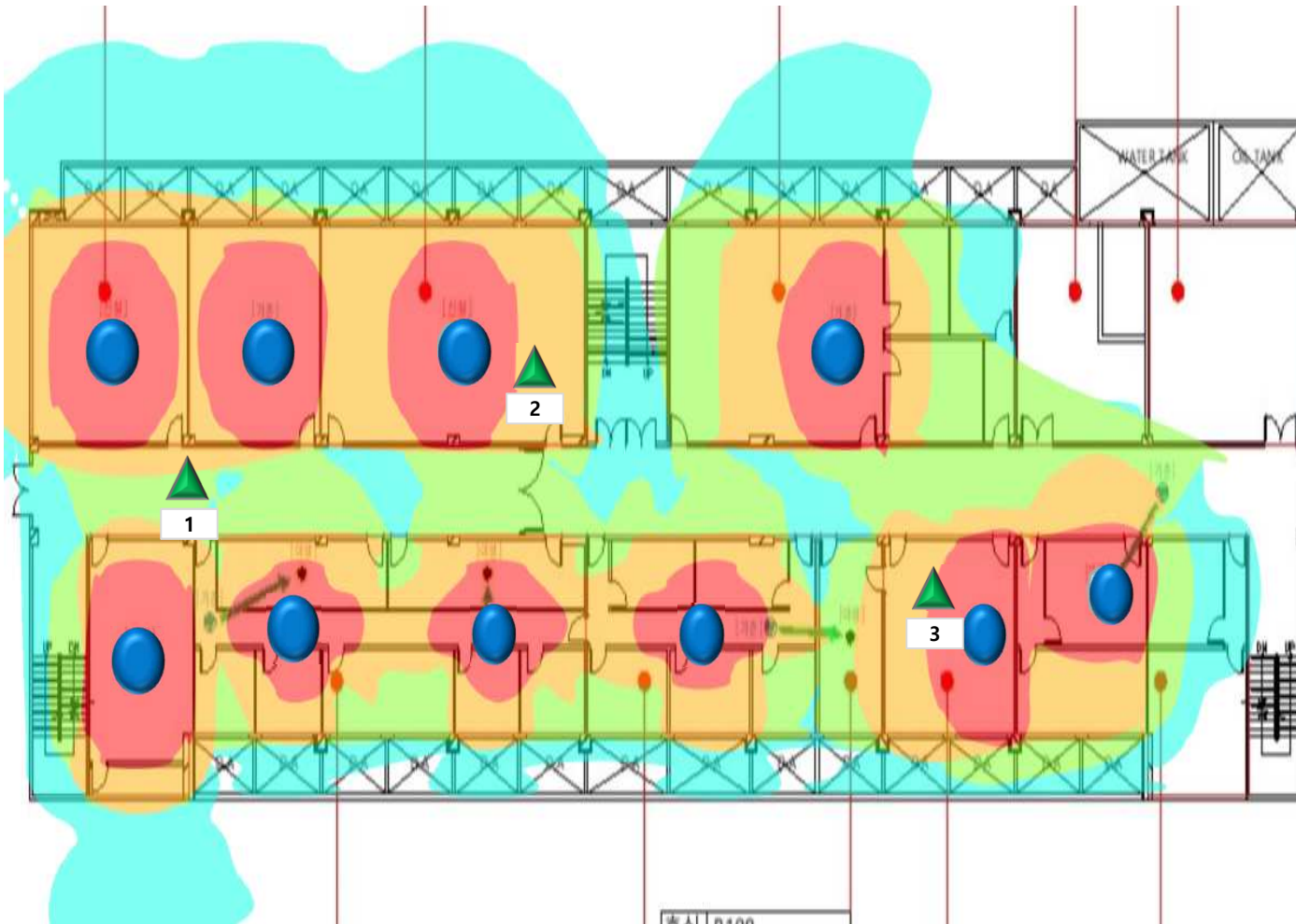


자유관 지하1층



측정 위치	신호세기	Through Put Up/Down	
		1	-52dbm
2	-55dbm	172M	116M
3	-49dbm	144M	70M

자유관 1층



AP



측정위치



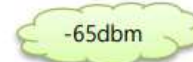
-45dbm

매우 좋음



-55dbm

좋음



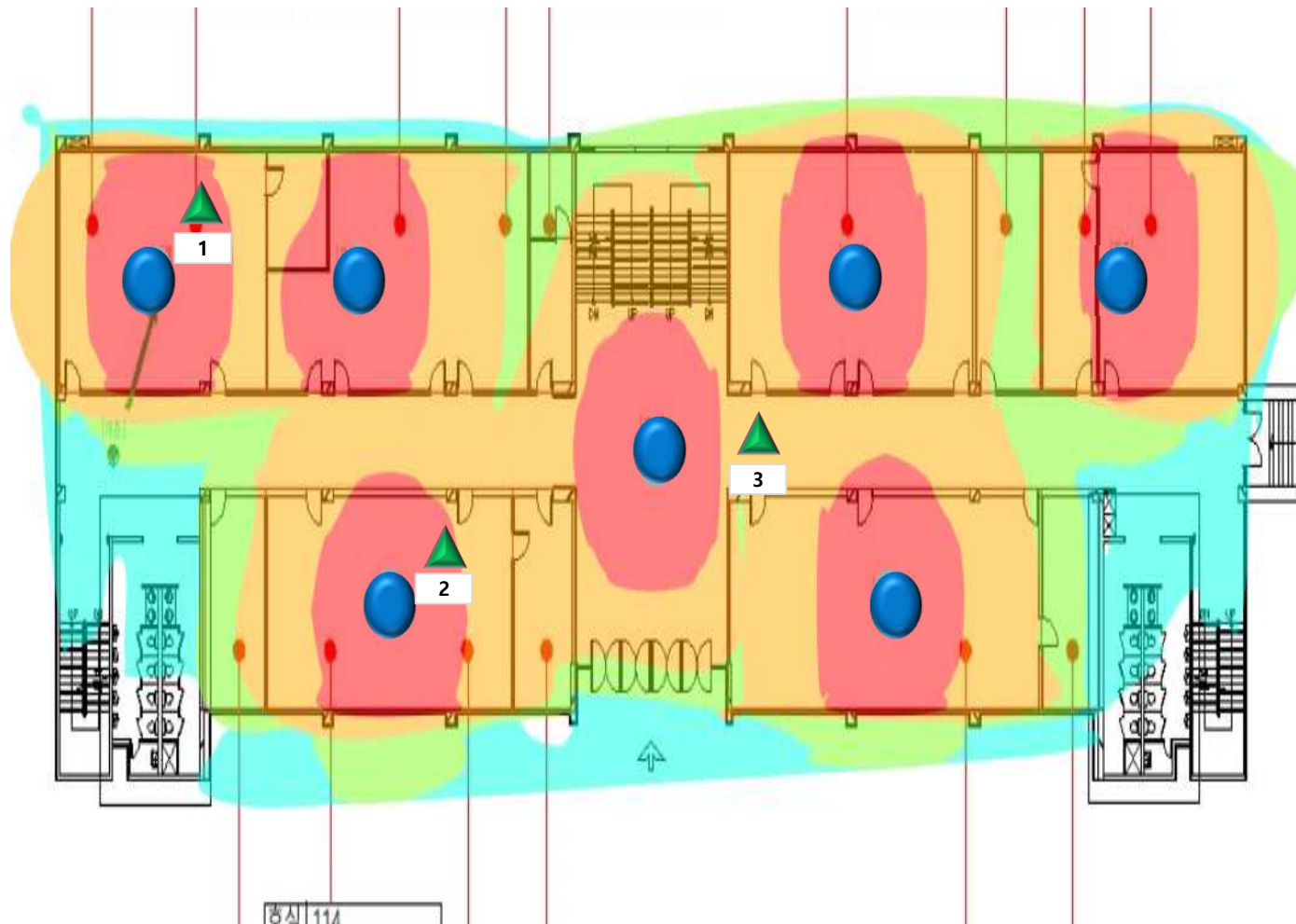
-65dbm

보통



-75dbm

약함



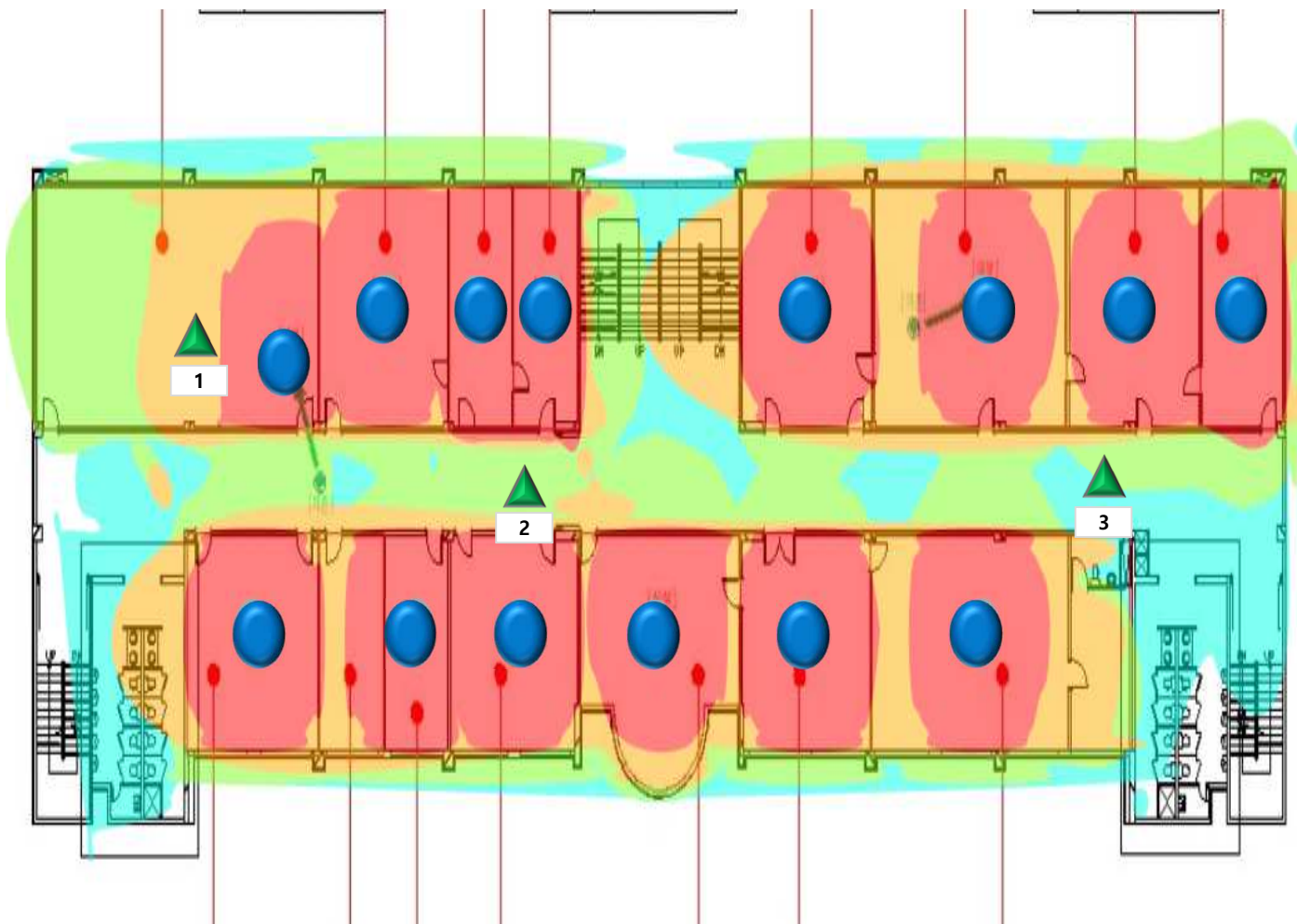
측정 위치	신호세기	Through Put Up/Down	
		Up	Down
1	-41dbm	136M	117M
2	-45dbm	102M	85M
3	-52dbm	151M	54M

자유관 2층

● AP ▲ 측정위치

-45dbm -55dbm -65dbm -75dbm

매우 좋음 **좋음** **보통** **약함**



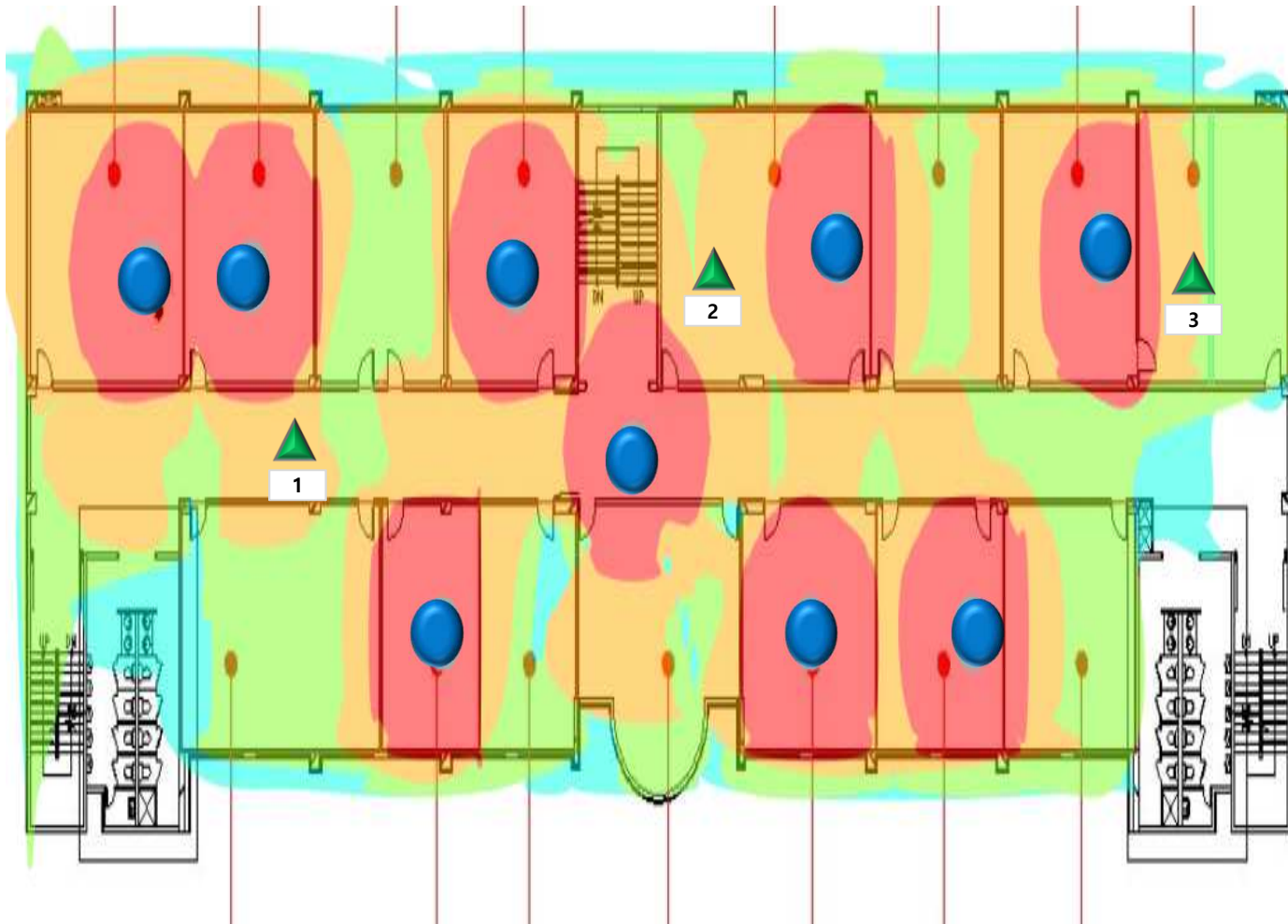
측정 위치	신호세기	Through Put Up/Down	
		1	-52dbm
2	-60dbm	140M	45M
3	-63dbm	190M	39M

자유관 3층

● AP ▲ 측정위치

-45dbm -55dbm -65dbm -75dbm

매우 좋음 **좋음** **보통** **약함**



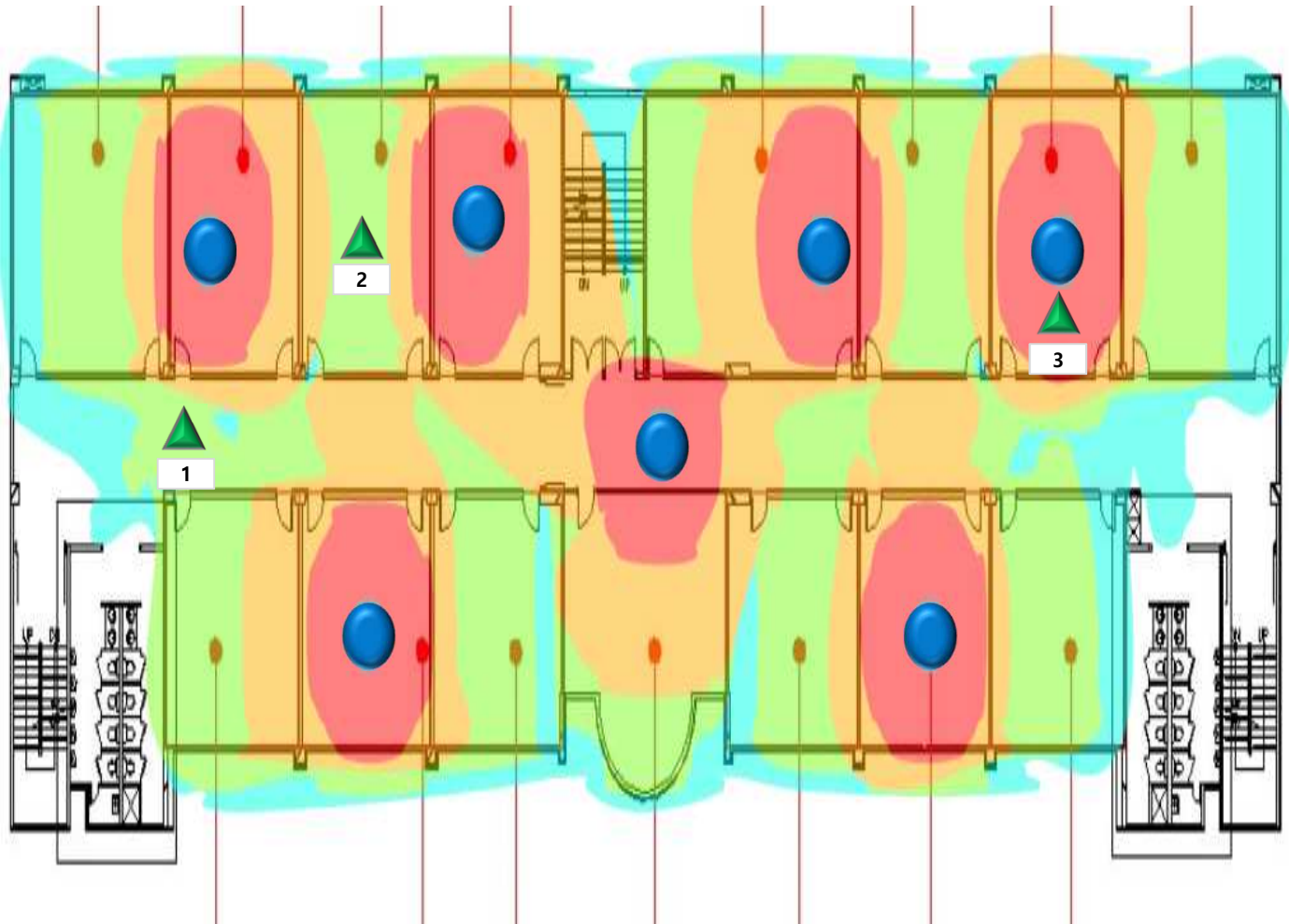
측정 위치	신호세기	Through Put Up/Down	
		1	-56dbm
2	-49dbm	45M	78M
3	-67dbm	60M	38M

자유관 4층

AP 측정위치

-45dbm -55dbm -65dbm -75dbm

매우 좋음 **좋음** **보통** **약함**



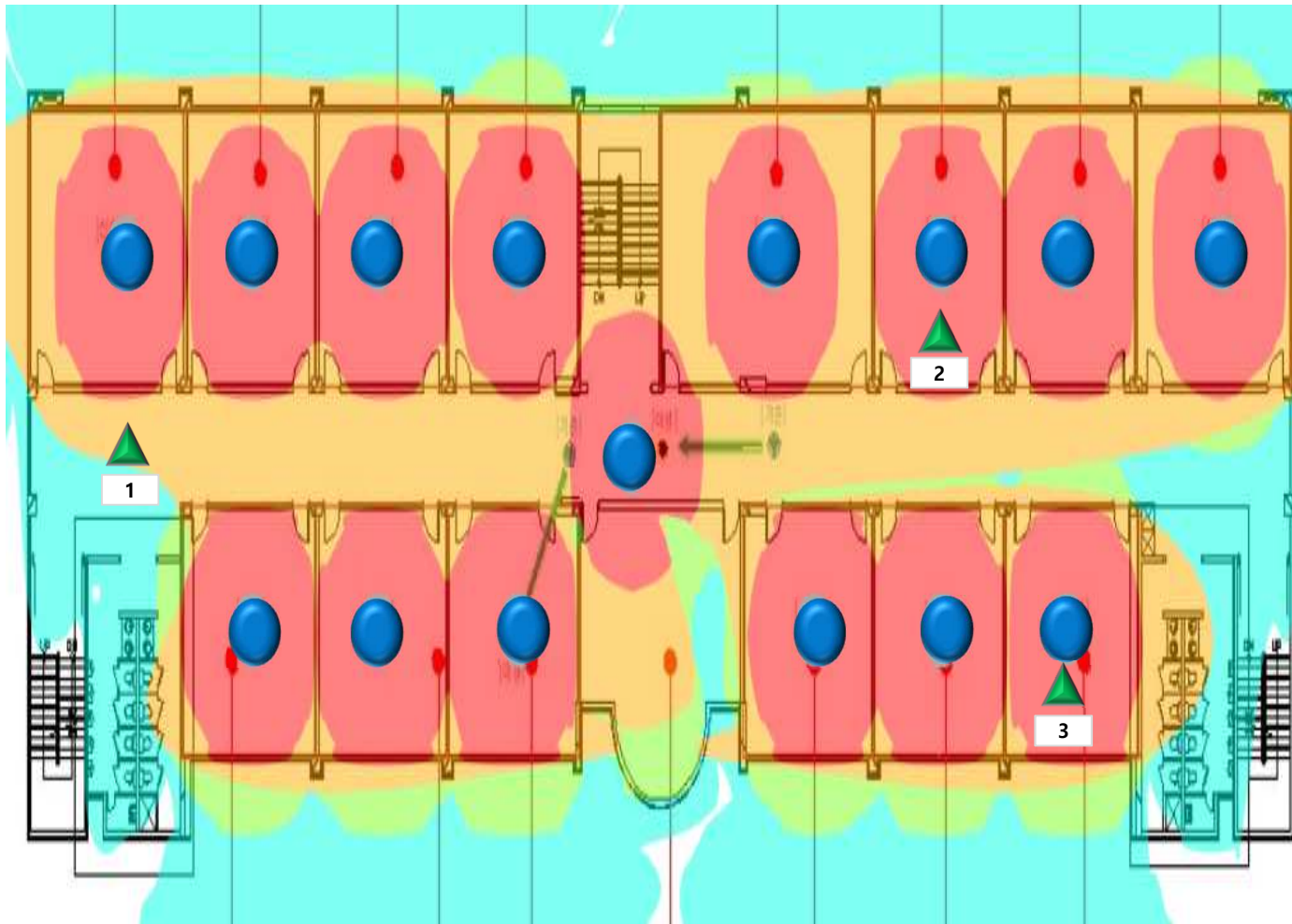
측정 위치	신호세기	Through Put Up/Down	
		1	-60dbm
2	-62dbm	115M	91M
3	-49dbm	82M	114M

자유관 5층

● AP ▲ 측정위치

-45dbm -55dbm -65dbm -75dbm

매우 좋음 **좋음** **보통** **약함**



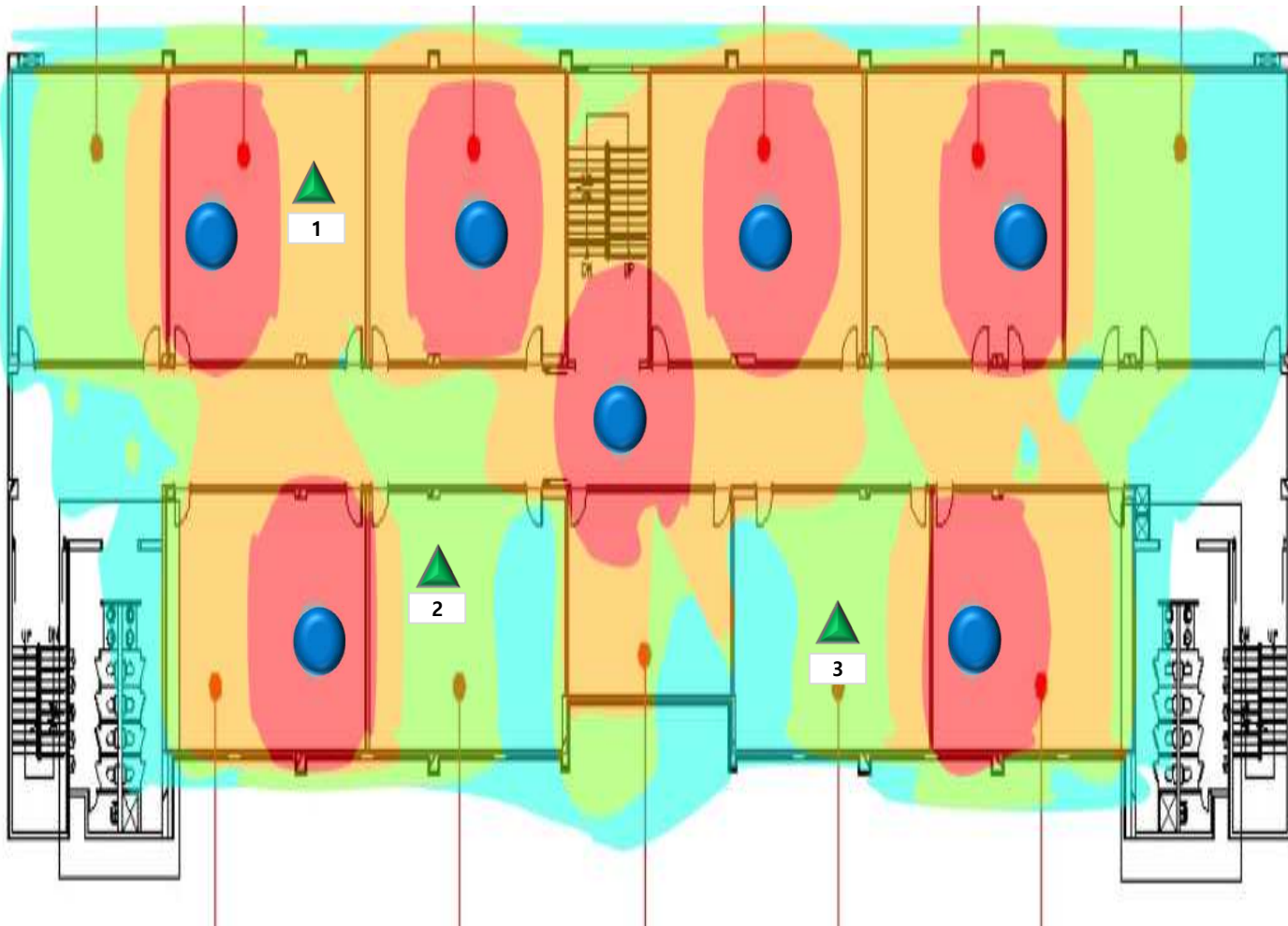
측정 위치	신호세기	Through Put Up/Down	
		1	-65dbm
2	-44dbm	164M	109M
3	-48dbm	124M	99M

자유관 6층

● AP ▲ 측정위치

-45dbm -55dbm -65dbm -75dbm

매우 좋음 **좋음** **보통** **약함**



측정 위치	신호세기	Through Put Up/Down	
		1	-49dbm
2	-61dbm	80M	61M
3	-63dbm	128M	57M